



CIRCULATE TO:
Parts Manager
Sales Manager
Service Manager
Maintenance Mgr

PRODUCT SUPPORT BULLETIN #216

PRODUCT: TC 301 Compactors

Oct. 5, 2001

SUBJECT: Kit part number 650-8806

EQUIPMENT AFFECTED: S/N: 2000068-2,-4,-5,-6,-7,-8 2000070-1,-3,-5,-6 2000088-2

CLASSIFICATION: Mandatory Safety
Mandatory Repair
Optional Repair
Fix-as-fail
Information

SITUATION: Compactors mounted on machines that supply 50-61 gpm.

SOLUTION: Install the above kit contents which includes high flow motor, hose and fittings and 4 isolator rubber mounts, instructions included.

PROGRAM INSTRUCTIONS: Assemble as attached drawing #650-8806. Do not mix old and new isolators. Submit a warranty claim form with the serial number, obtain a return authorization number and return the removed parts.

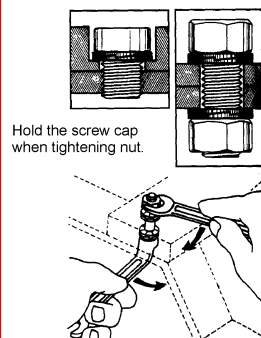
(See Attached Drawing #650-8806)

BOLT SIZE	TORQUE INSTRUCTIONS
.50 UNF	APPLY LOCTITE 271 AND TORQUE TO 90 FT-LBS. IN LUBRICATED CONDITION

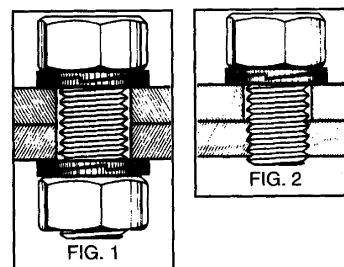
DISASSEMBLY / ASSEMBLY INSTRUCTIONS

1. DISCONNECT HOSES FROM MOTOR AND FITTINGS.
2. REMOVE EXISTING FITTINGS (1800292) FROM MOTOR.
3. REMOVE EXISTING HYDRAULIC MOTOR (1007807) FROM COMPACTOR AND PLUG PORTS.
4. INSTALL HIGH FLOW MOTOR (ITEM 2) REFER TO IMPORTANT NOTE REGARDING HOSE ROUTING AND MOTOR ORIENTATION. TORQUE BOLTS TO VALUE STATED IN CHART.
5. INSTALL NEW FITTINGS (ITEM 3) IN MOTOR.
6. REMOVE EXISTING BULKHEAD FITTINGS.
7. DRILL BULKHEAD HOLES TO THE DIMENSION LISTED.
8. INSTALL NEW BULKHEAD FITTINGS (ITEM 4) AND CAPS.
9. CONNECT NEW HOSES (ITEMS 7) TO FITTINGS.
10. APPLY H DECAL (ITEM 6) TO COMPACTOR AS SHOWN.
11. RECORD SERIAL NUMBER OF HIGH FLOW HYDRAULIC MOTOR ON FINAL INSPECTION SHEET OF UNIT. (APPLICABLE TO UNITS MODIFIED IN HOUSE ONLY).

Nord-Lock Vibration Proof Fasteners



Where accessible and for optimum performance, washers should be placed under both bolt head and nut.



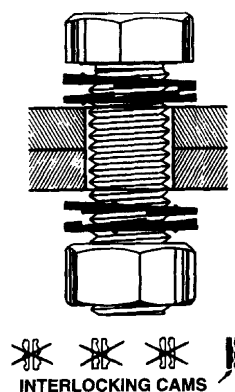
The Superior locking performance of a Nord-Lock fastener is secured only if it is correctly assembled and the proper Nord-Lock fastener combination is selected. It is imperative that the following instructions are closely observed:

Nord-Lock Washer Pairs must be assembled cam face to cam face.

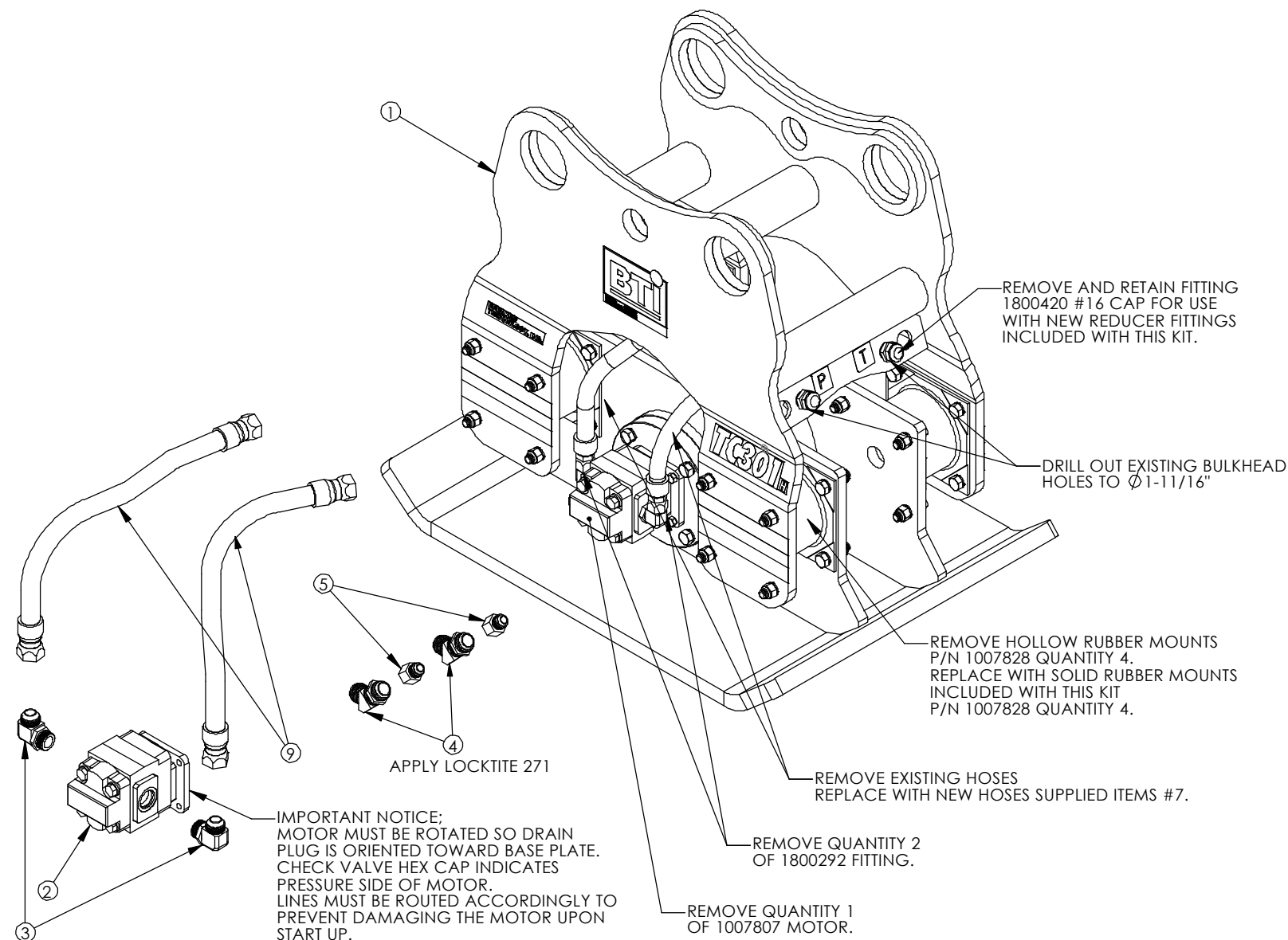
When used in conjunction with a bolt/nut fastener, install a pair of Nord-Lock Washers, cam face to cam face, between both the bolt head and the joint material and the nut and the joint material (see Fig 1.). The teeth of the washer pairs will now bite into the bolt head and the joint material as well as the nut, and the joint material on the corresponding side.

When used in conjunction with a cap screw or bolt in a threaded hole, install one pair of Nord-Lock Washers, cam face to cam face, under the cap screw or bolt head (see fig 2.). The teeth of the washer pair will now bite into the cap screw or bolt head on one side and the joint material on the other side.

Due to the preload, the screw is prevented from turning in either direction. Should the screw tend to loosen, it causes the mating washer to slide up the cams on the other washer, producing wedge action, and the preload is maintained.



ITEM NO.	QTY.	PART NO.	DESCRIPTION
1	1	650-8678	ASSEMBLY - HYDRAULIC COMPACTOR TC301
2	1	1007837	MOTOR - HYDRAULIC W/INTEGRATED CHECK VALVE
3	2	1800294	FITTING 2062-20-20
4	2	1801591	FITTING 2042-20-20
5	2	1800427	FITTING 221501-20-16
6	2	500-0435	DECAL - COMPACTOR H FOR HIGH FLOW
8	4	1007828	RUBBER MOUNT (SOLID)
9	2	H05-MMM-001	HOSE ASSEMBLY



IMPORTANT NOTICE:
MOTOR MUST BE ROTATED SO DRAIN PLUG IS ORIENTED TOWARD BASE PLATE. CHECK VALVE HEX CAP INDICATES PRESSURE SIDE OF MOTOR. LINES MUST BE ROUTED ACCORDINGLY TO PREVENT DAMAGING THE MOTOR UPON START UP.

DO NOT SCALE DRAWING			
GENERAL SPECIFICATIONS UNLESS OTHERWISE SPECIFIED			
1) BREAK ALL SHARP EDGES			
2) TOLERANCE - FRACTIONS	$\pm 1/16$		
	$.00 \pm .03$		
	$.000 \pm .010$		
3) ANGLES	1°		
4) FINISH	125		



NOTICE
This drawing or print is the property of BREAKER TECHNOLOGY LTD. INC. It is loaned with the expressed agreement that the drawing and the information contained therein is the property of BREAKER TECHNOLOGY LTD. INC. and will not be reproduced, copied or otherwise disposed of directly or indirectly and will not be used in whole or in part to assist in the making or to furnish any information for making drawings, prints, or other reproductions thereof, or for the making of apparatus of parts thereof except upon written permission from BREAKER TECHNOLOGY LTD. INC.
The acceptance of this drawing or print will be construed as an acceptance of the foregoing agreement.

REV. No	ECN	BY	DATE	MATL
A	5147	JSD	09/27/01	
REL	*	JSD	09/13/01	

DRAWN BY JSD DATE 09/13/01

TITLE - FIELD KIT - HYDRAULIC HIGH FLOW CONVERSION TC301H & RUBBER ISOLATOR UPGRADE

SCALE 1:16 WEIGHT PART No. 650-8806